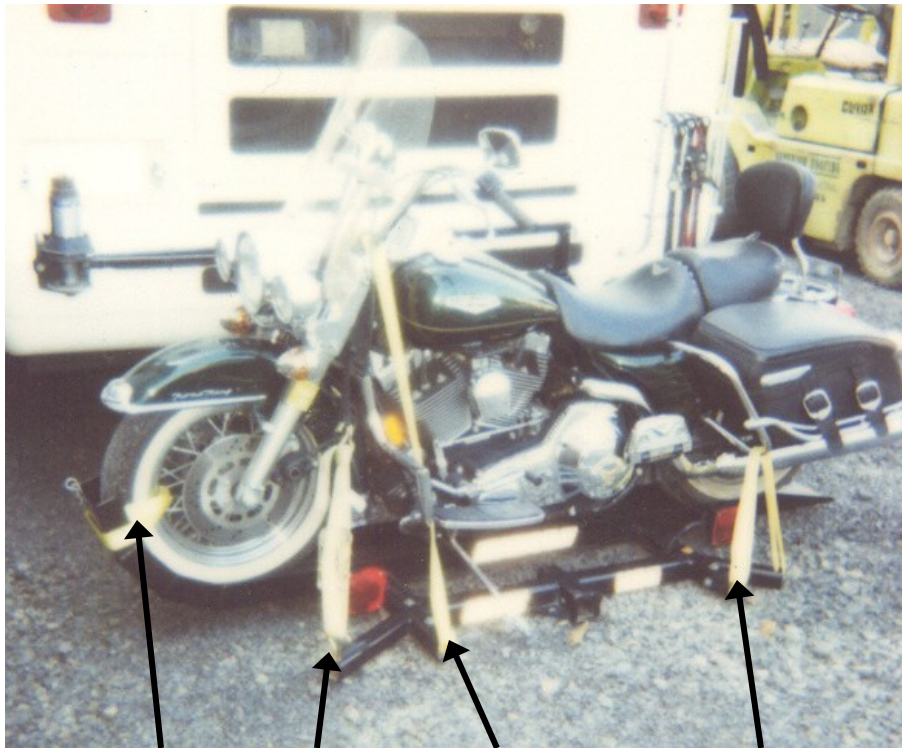


Overbilt Lifts Inc.  
(866)382-1369



1.

2.

3.

4.

1. Strap around tray and thru front wheel.

EACH SIDE OF MOTORCYCLE

2. Loop strap around motorcycle frame, ratchet strap hook to loop strap & tie down location.

3. Loop strap around handlebar, ratchet strap to tie down location.

4. Ratchet strap hooked to tie down location, looped over crash bar to next tie down location.

**USING RATCHET STRAPS COMPRESS MOTORCYCLE SUSPENSION TO  
WITHIN ONE INCH OF BEING BOTTOMED OUT.**